

MERIDIAN Deliverable D29 – D4.05

“Data exchange and use of the data for traveller information services and traffic management”

Document Information

Authors

| Name | Organisation |
|---------------|--------------|
| Ulrich Haspel | StMB |

Distribution

| Date | Version | Dissemination |
|------------|---------|---------------|
| 03.06.2025 | 1.0 | Public |

Abstract

The Bavarian traveller information service Bayerninfo only covered Bavaria and limited data from Austria before the start of MERIDIAN. Within the project, the service was extended by additional data from the rest of Germany, the Czech Republic, Austria, Switzerland and Northern Italy. The technical implantation was executed in a different way than initially planned, but the result is as planned a full coverage of all Bavarian neighbour regions.

Starting point

The Traffic Information Centre Bavaria (VIZ-BY) is the core system for collection, management and dissemination of traffic information in Bavaria. It serves as the regional Bavarian data center for publishing road traffic data on the German National Access Point (NAP), the Mobilithek. Besides the role as a data hub, it is also the base for the information service Bayerninfo.

The main goals of all activates connected with the VIZ-BY is to collect all data from the Bavarian sources for the provision on the NAP and to provide traveller information services for the Bavarian citizens and visitors.

Before the start of the MERIDIAN project, the VIZ-BY received data from Bavaria and limited additional data from other regions. To enhance the traveller information

services, especially in the cross-border context, there have been plans to add data from the neighbouring regions around Bavaria. As the State of Bavaria is a major transit region in Europe, there are many incoming and outgoing streams of traffic, especially from and towards the Alpine region, the East-West-corridor with the Czech Republic as the closest neighbour and the other German states.

Works accomplished during MERIDIAN

In the MERIDIAN proposal, it was planned to exchange data regarding roadworks, traffic flow, camera images, truck parking information and other data sets with stakeholders from all neighbouring regions and frequent destinations of Bavarian travellers, even if the regions are not partnering in this specific project.

During the planning phase of the data exchange, the Bavarian Road Administration faced several technical issues regarding the exchange of data. Receiving the data from each neighbouring region separately would have caused major additional difficulties due to different technical specifications of data and interfaces. In the same period of time a new contractor for live data in Bavaria was found, who offered to deliver data from all those regions in the same format and via an already established interface. This contractor collects the data from all public sources in Europe anyway, so the content stays the same.

Starting from June 2025, Bayerninfo features data from the neighbouring regions in the English and the German version.

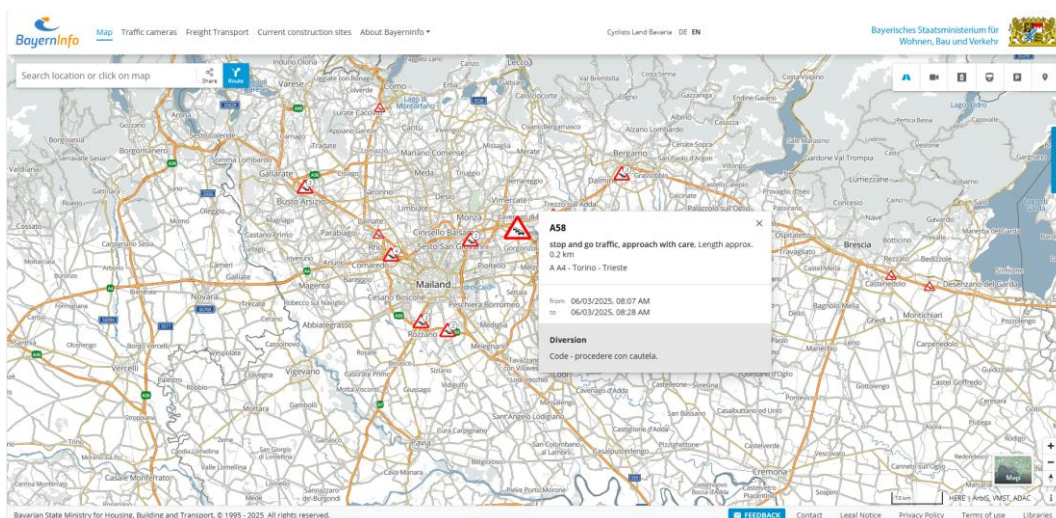


Figure 1: Traffic Jam message from Italy at Bayerninfo.de

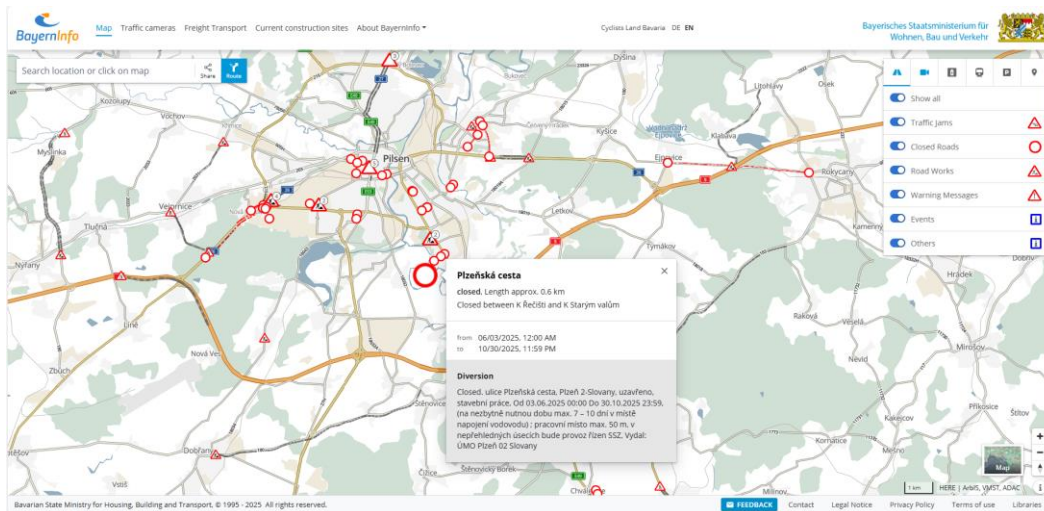


Figure 2: Road Works message from the Czech Republic at Bayerninfo.de

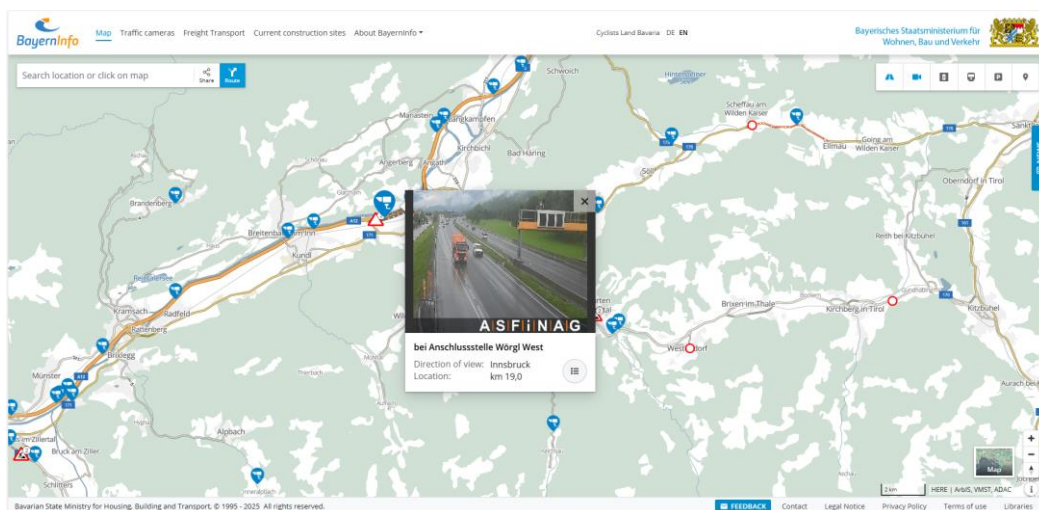


Figure 3: Live Camera image form Austria at Bayerninfo.de

Benefits

The data exchanged in this project can be used for traveller information as well as traffic management. Knowledge of the traffic situation can improve the decisions of travellers, logistics partners and traffic managers. Efficient traffic management on the corridors has a positive impact in solving environmental problems and improving air quality. Information exchange and a common management of dangerous situations on the alpine corridor increase traffic safety.