

MERIDIAN Deliverable D44 – “D5.03 - Integration of data sources on green mobility”

Document Information

Authors

Name	Organisation
Paul Homburg	StMB

Distribution

Date	Version	Dissemination
31.12.2025	00-00-01	MER SharePoint
16.01.2026	00-00-02	PAT for review
23.01.2026	00-01-00	PAT approved
25.03.2026	01-00-00	SC approved

Abstract

The Bavarian traveller information service BayernInfo provides multiple data concerning traffic information. This includes real-time data to generate congestion messages, notifications of dangerous situations, road works information, data on public transport and more. Since green mobility plays a central role in decarbonisation, some further associated services have been integrated into BayernInfo. These include live data on shared mobility services, live data on electromobility and freight villages and are presented in this document. The features not only offer a better user experience but also promote multimodality, which plays a key role in achieving the goal of greener transport.

Background

The Traffic Information Centre Bavaria (VIZ-BY) is the core system for collection, management and dissemination of traffic information in Bavaria. It serves as the regional Bavarian data centre for publishing road traffic data on the German National Access Point (NAP), the Mobilithek. Besides the role as a data hub, it is also the base for the information service BayernInfo (<https://www.bayerninfo.de/>), on which all the integrated data is displayed.

New features accomplished during MERIDIAN

The MERIDIAN proposal included three new, relevant data sources for green mobility:

1. Live E-charging data

BayernInfo now displays charging stations and their occupancy status as a layer. The colour indicates at first glance whether a station is still available (in green) or already fully occupied (in red).

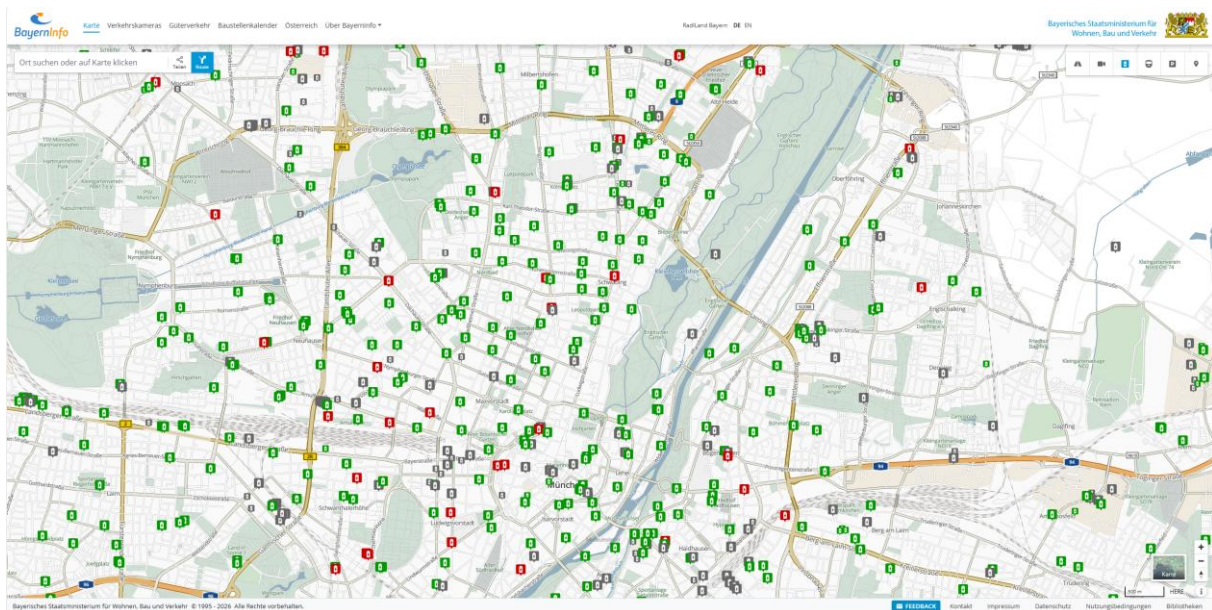


Figure 1: Overview of E-charging stations in Munich

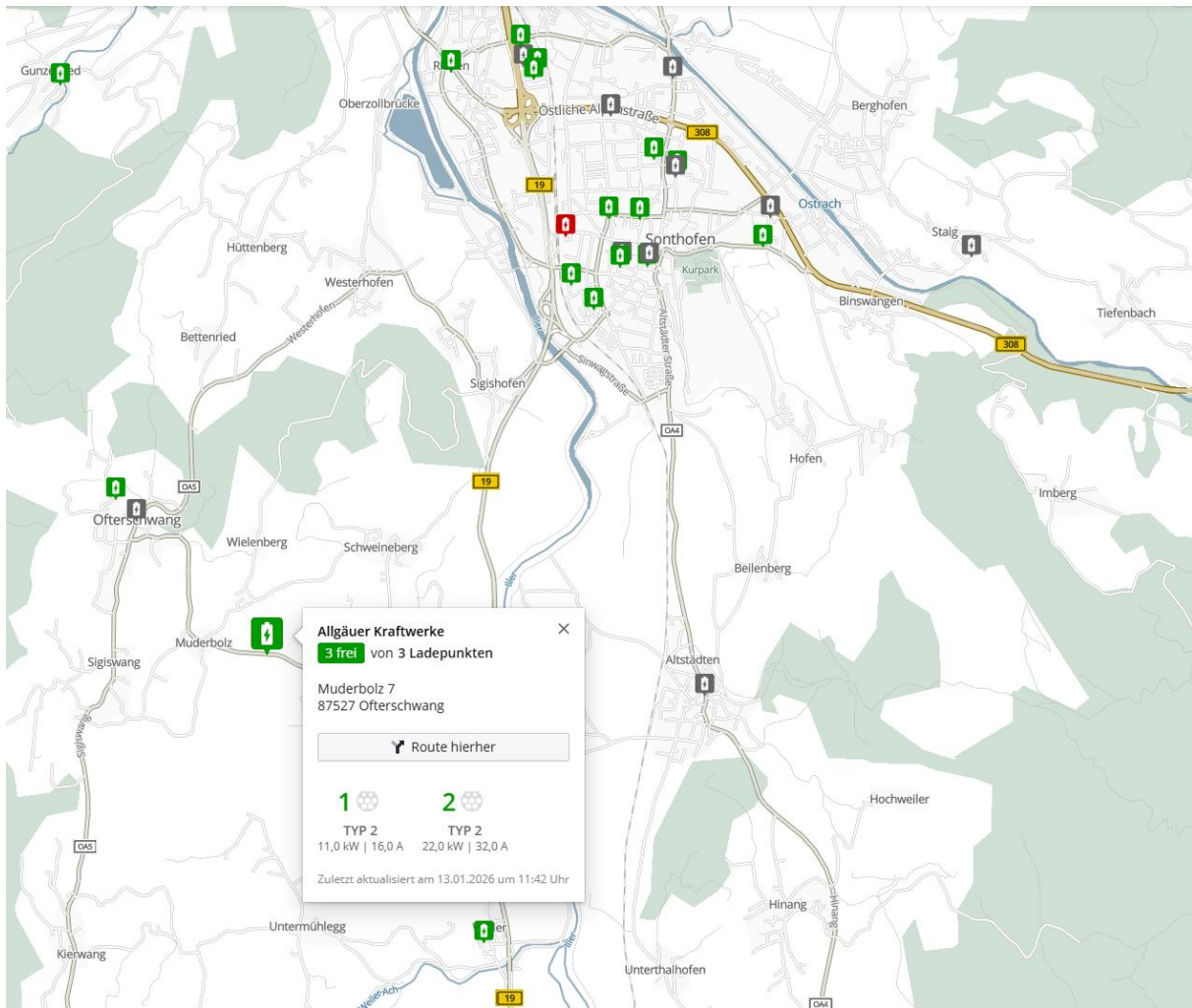


Figure 2: E-charging stations in a rural area with display of type and number of free dispensers

By clicking or tapping on a charging station, the number of free dispensers and the composition of the connector types of the charging stations are visible. This allows users to immediately see whether the station has vehicle-compatible dispensers. Little icons clarify the connector type which significantly facilitates identifying the compatibility.

This tool not only supports people who already drive electric vehicles but also reduces range anxiety, prevents unnecessary search traffic and enables more efficient trip planning for existing and new EV users, for example commuters.

All the locations can be integrated directly into route planning.

This feature is also available in the BayernInfo app and in English.

2. Data on freight villages

Data on these logistic centres serve a new user group of fleet managers and truck companies and serve as node between road and rail.

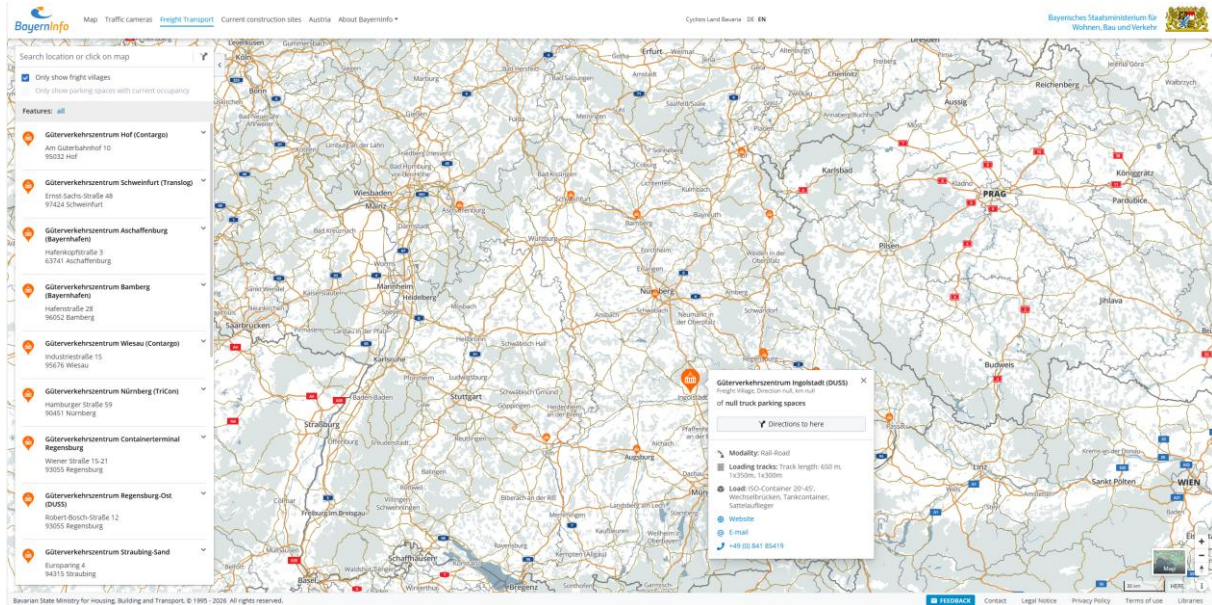


Figure 3: Data on freight transport in BayernInfo

Each location on the map is enriched with data on modalities for combined traffic, loading tracks and means of load (e.g. dimensions of containers for combined traffic). This supports strategic planning and decision making for fleet managers.

The logistic centres, together with its information, play a significant role in shifting freight traffic from road to rail. This step towards electromobility is particularly important in the vulnerable Alpine Brenner corridors.

3. Live data on shared mobility

The integration of live data on shared mobility, such as cars, bikes and scooters is now fully integrated into the BayernInfo environment. The following examples show the data on BayernInfo by means of a Mobility Monitor, a digital signage display at frequented locations. In this case, the nearest means of shared mobility, based on the programmed location of the device, are being displayed.



Figure 4: A Mobility Monitor with all its displayed data

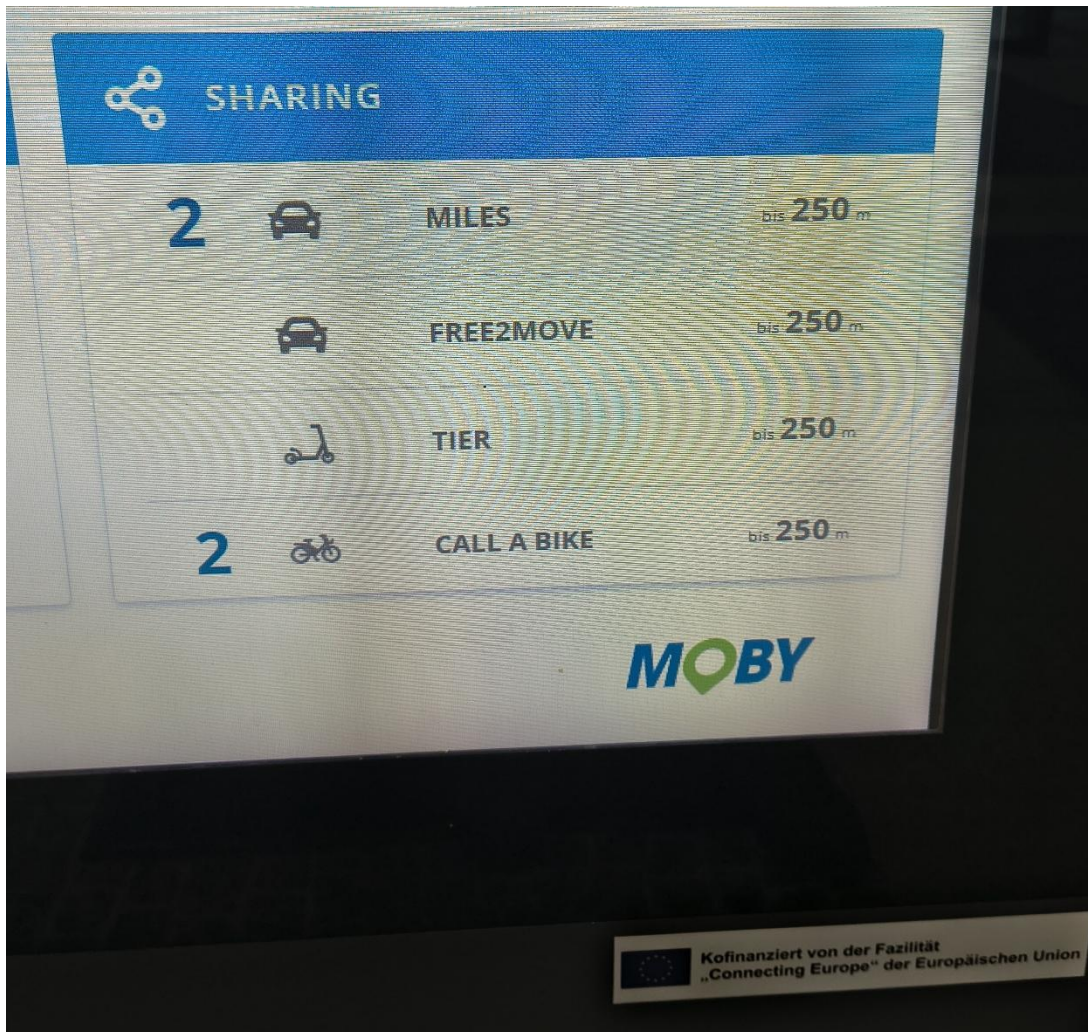


Figure 5: Live data on different means of shared mobility on the Mobility Monitor

Displaying this information, users can quickly locate available options nearby and plan their trips more effectively. Enhancing the accessibility and prominence of shared mobility offerings increases user adoption and supports the transition of each individual towards more environmentally friendly transportation systems.

Benefits

The data exchanged in this project can be used for traveller information as well as traffic management. Knowledge of the traffic situation can improve the decisions of travellers, logistics partners and traffic managers. Efficient traffic management on the corridors has a positive impact on solving environmental problems and improving air quality. Information exchange and a common management of dangerous situations on the alpine corridor increase traffic safety.